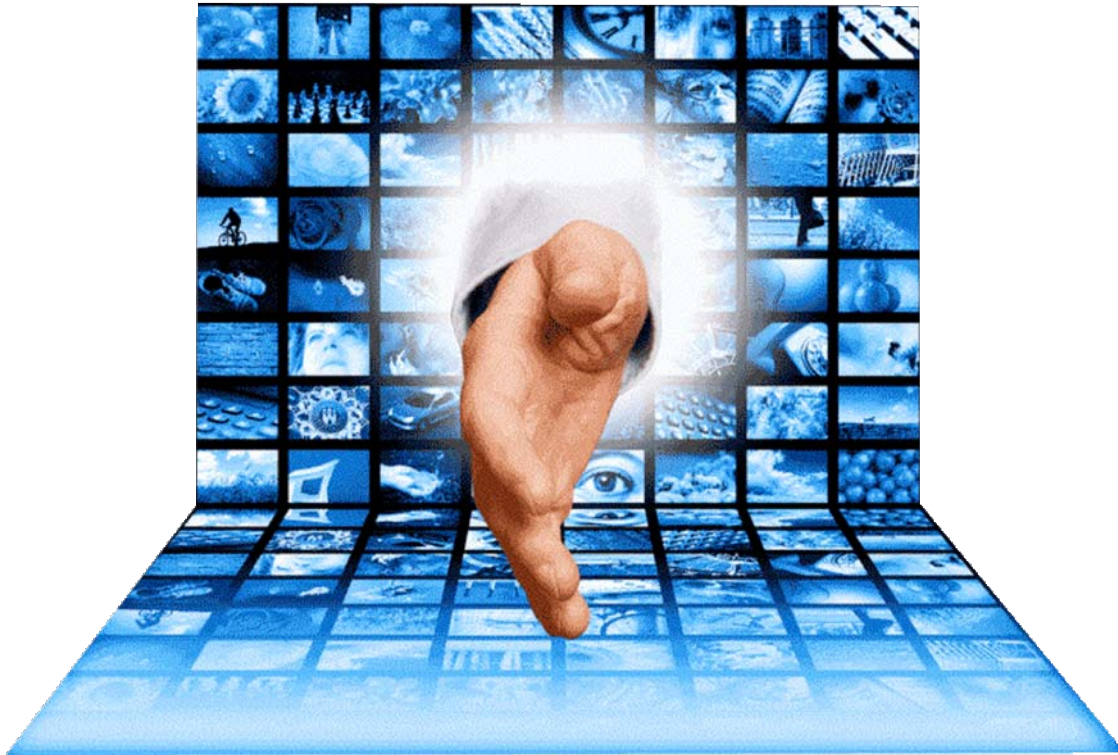


## Social Media, Part I: Connecting with Your D8 Community

*By Gene M. Rukavina, AALAS District 8 Trustee*



Did you know that National AALAS has a Blog, and is on Facebook, LinkedIn, Twitter, and YouTube? You can find the buttons (pictured below) on the AALAS website's home page.



Did you know you could follow AAALAC on Facebook and Twitter? Clearly, Social Media matters within the Laboratory Animal Science community.



When you look at a map of AALAS District 8 (pictured left), its geographical size makes it a daunting challenge for D8 members to establish and maintain those interpersonal connections – even within their own states! As I write this, the 2012 D8 meeting is just around the corner. While continuing education is a vital component of such meetings, the importance of networking cannot be overlooked. Social Media gives us that opportunity to stay connected with our colleagues – no matter the distance between us.

I recently created AALAS D8 pages on Facebook and LinkedIn. If aren't already a member, I would encourage you to join us on the Social Media landscape! If you have any questions or concerns about Social Media, please don't hesitate to ask me: [grukavina@mednet.ucla.edu](mailto:grukavina@mednet.ucla.edu)  
I hope to see many of you at the upcoming D8 meeting and to stay connected via Social Media!